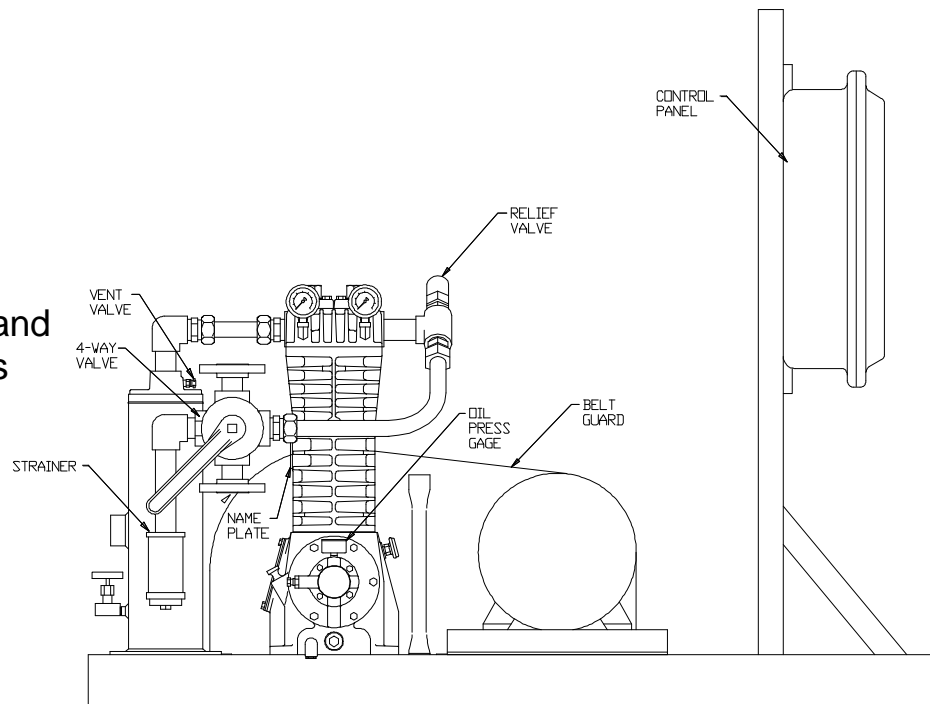


COMPRESSOR SOLUTIONS

LB361-LU
LPG Liquid Transfer and
Vapor Recovery Units
driven @ 725 RPM

Gas:
Propane
n=1.13 MW=44.1



Inlet:
40 - 200 psig (2.8 - 14.1 kg/cm²g), Ambient Temperature
Outlet:
60 - 230 psig (4.2 - 16.2 kg/cm²g)

Compressor Trim: Buna-N O-rings and Aluminum Gaskets

Accessories: 15 HP Motor, Liquid Trap with Mechanical Float, Suction Strainer, 4-Way Flow Control Valve, Discharge relief valve, Pressure Gauges for suction and discharge gas pressures and crankcase oil pressure. All electrical devices are explosion proof and are for 50 Hz operation.

Two of these LB361-LU units are being used to transfer Propane from rail tank car to storage in Shanghai, China. Very similar units have also been recently sent to Chile and Saudi Arabia. These are typical Propane transfer compressors with both a liquid trap and a 4-way flow control valve. The trap prevents entry of liquid into the compressor while the strainer prevents entry of foreign material. After all the liquid is transferred out of the rail car, the 4-way valve is reversed so that the remaining liquid heel and vapors can also be recovered.