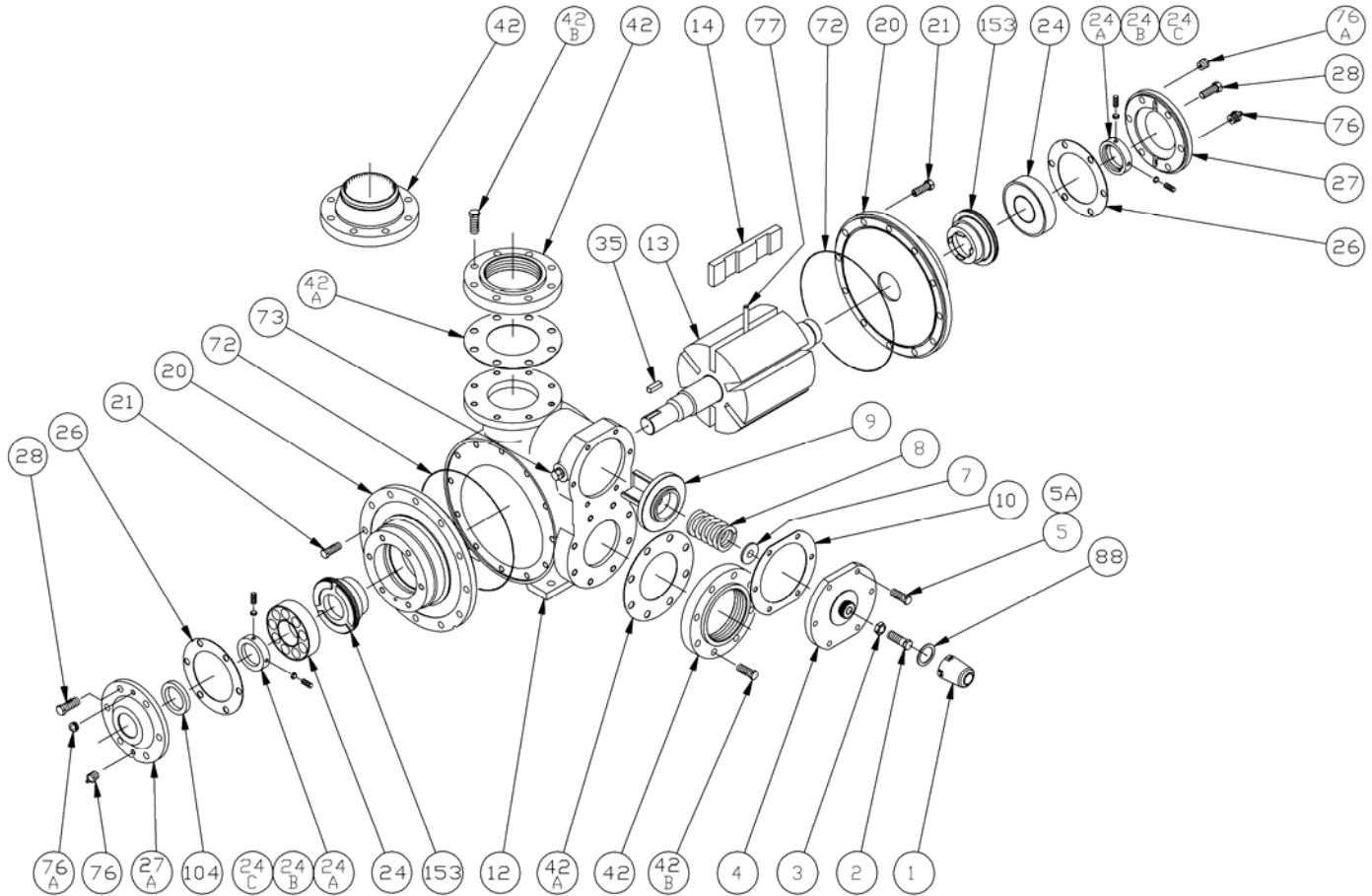


BLACKMER PARTS LIST

PUMP MODEL: TX4A

Keep with Instructions 201-A00 for Installation, Operation and Maintenance

Section	201
Effective	Jan 2010
Replaces	Sept 2009



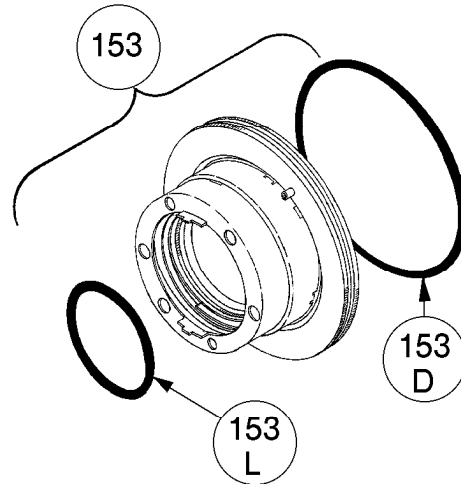
Ref. No.	Description	Parts Per Pump	Part No.	Ref. No.	Description	Parts Per Pump	Part No.	
1	Cap – Relief Valve (R/V)	1	413957	24B	Setscrew	4	¹ 922104	
2	Adjusting Screw – R/V	1	436307	24C	Jam Nut	4	¹ 922923	
3	Locknut – Adjusting Screw	1	436355	26	Gasket – Bearing Cover	2	¹ 386950	
4	Cover – R/V	1	411904	27	Bearing Cover – Outboard	1	041905	
5	Capscrew – R/V Cover	5	920351	27A	Bearing Cover – Inboard	1	041903	
5A	Capscrew w / Hole – R/V Cover	1	920348	28	Capscrews – Bearing Cover	12	920491	
7	Spring Guide – R/V	1	426355	35	Key – Shaft, Square	1	^{1, 2} 909149	
8	Spring, Steel – R/V (35-50 psi)	1	476303	42	Flange – 4" NPT	1-2	651900	
	Spring, Steel – R/V (51-75 psi)		476310		Flange – 4" Weld		651905	
	Spring, Steel – R/V (76-125 psi)(Std.)		476305		42A		Gasket – Flange	2
9	Valve – R/V (Std.)	1	456315	42B	Capscrew – Flange	16	920532	
	Valve – R/V (Nickel Plated)		456300	O-Ring – Head (Buna-N) (Std)	2	¹ 702023		
10	Gasket – R/V Cover	1	¹ 531903	72		O-Ring – Head (FKM)	¹ 702024	
12	Cylinder	1	021906	72		O-Ring – Head (PTFE)	¹ 702093	
					73	Gage Plug	2	908198
					76	Grease Fitting	2	317815
20	Head	2	031908	76A	Grease Relief Fitting	2	701992	
21	Capscrews – Head	24	920510	77	Push Rod	3	¹ 121905	
24	Ball Bearing	2	¹ 903182	88	Gasket – R/V Cap	1	¹ 533908	
24A	Lock Collar – Bearing	2	¹ 721937	104	Grease Seal	1	¹ 904190	
					Kit - Maintenance		898953	

¹ Included in Maintenance Kit

² Maintenance Kit also includes Woodruff Key 909135 used previously.

MECHANICAL SEALS – TX4A MODELS

REF. NO.	PART NAME	PARTS PER PUMP	PART NO.
153	Mechanical Seal Complete – Std. Cast Iron Stationary Seat, Carbon Seal Face, Buna-N O-Rings. (INCN)	2	¹ 336958
	Mechanical Seal Complete - Cast Iron Stationary Seat, Carbon Seal Face w/ FKM O-Rings. (IVCV)		336982
	Mechanical Seal Complete - Cast Iron Stationary Seat, PTFE O-Ring, Carbon Seal Face w/ PTFE Seal Ring. (IACT)		331973
	Mechanical Seal Complete - Cast Iron Stationary Seat, Bronze Seal Face w/ FKM O-Rings. (IVBV)		336984
153D	O-Ring - Stationary (Buna-N)	2	701945
	O-Ring - Stationary (FKM)		711932
	O-Ring - Stationary (PTFE)		702090
153L	O-Ring - Rotating (Buna-N)	2	701933
	O-Ring - Rotating (FKM)		701967
	Seal Ring - Rotating (PTFE)		**



¹ Included in Maintenance Kit

** PTFE Rotating Seal Ring is not available as a separate part.

