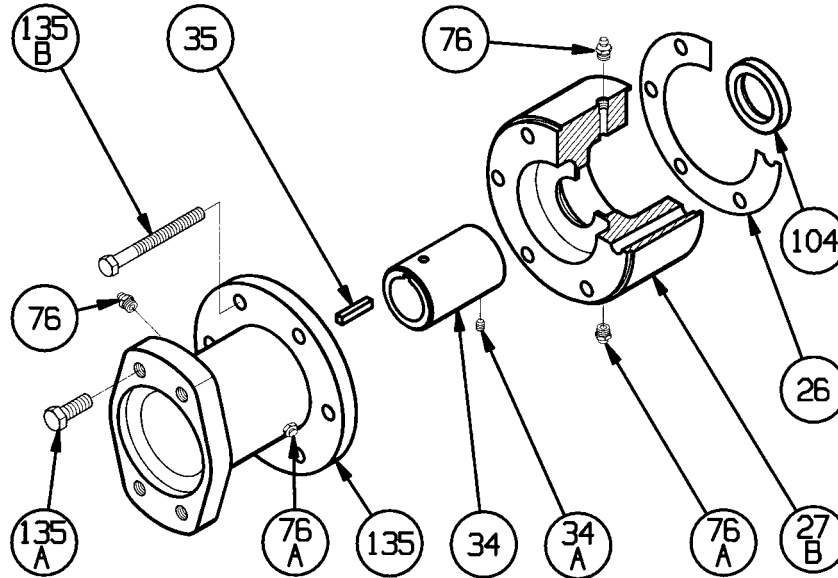


BLACKMER HYDRAULIC MOTOR ADAPTER KITS**PUMP MODEL: STX3**

(See Installation Instructions on back)

960080
Page 1 of 2**PARTS LIST**
206-A09

Section	206
Effective	February 2000
Replaces	New



REF. NO.	DESCRIPTION OF PARTS	QTY.	Kit No. 892227 For Pump Model: STX3
			Part Numbers
26	Gasket - Bearing Cover	1	385125
27B	Bearing Cover / Spacer	1	835137
34	Coupling (1 ¼" x 35 mm)	1	906929
34A	Setscrew – Coupling	1	922075
35	Key – Pump	1	909206
35	Key – Motor	1	909184
76	Grease Fitting	2	317815
76A	Grease Relief Fitting	2	701992
104	Grease Seal	1	331908
135	Hydraulic Motor Adapter*	1	041803
135A	Capscrews – Adapter/Motor	2	920510
135B	Capscrews - Adapter/Bearing Cover	6	920434

NOTES: *Part Number 041803 = SAE A Motor Adapter.

Hydraulic Motor Adapter Kit allow field retrofit of STX3 models with parallel keyed 35mm shaft diameter.

blackmer
PEOPLE PROVIDING FLOW TECHNOLOGY WORLDWIDE

SAFETY DATA

NOTICE:

Blackmer pumps **MUST** only be installed in systems which have been designed by qualified engineering personnel. The system **MUST** conform to all applicable local and national regulations and safety standards.

These instructions are intended to assist in the installation and operation of the Blackmer hydraulic motor adapters, and **MUST** be kept with the pump.

Blackmer pump service shall be performed by qualified technicians **ONLY**. Service shall conform to all applicable local and national regulations and safety standards.

Thoroughly review the pump manual, all instructions and hazard warnings, **BEFORE** performing any work on the Blackmer pump.

Maintain **ALL** system and Blackmer truck pump operation and hazard warning decals.

▲ WARNING



Hazardous machinery can cause severe personal injury or property damage.

FAILURE TO SET THE VEHICLE EMERGENCY BRAKE AND CHOCK WHEELS BEFORE PERFORMING SERVICE CAN CAUSE SEVERE PERSONAL INJURY AND PROPERTY DAMAGE.

▲ CAUTION



Hazardous pressure can cause personal injury or property damage.

FAILURE TO RELIEVE SYSTEM PRESSURE PRIOR TO PERFORMING SERVICE CAN CAUSE PERSONAL INJURY OR PROPERTY DAMAGE.

NOTICE:

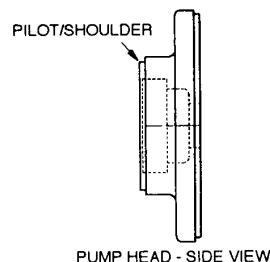
THE APPROPRIATE BLACKMER PUMP INSTRUCTIONS AND PARTS LISTS CAN BE OBTAINED BY CONTACTING BLACKMER CUSTOMER SERVICE AT THE ADDRESS, TELEPHONE NUMBER OR E-MAIL PROVIDED.

PUMP INSTRUCTION SHEETS AND PARTS LISTS

PUMP MODEL	PUMP INSTRUCTION SHEET	PUMP PARTS LISTS				
		1.5"	2"	2.5"	3"	4"
STX3	285/H	—	—	—	288/H1	—
TX(S)(D)	285/C	285/CA1	285/C1	285/C3	285/C5	285/C11
TXV	285/C	—	285/C15	285/C17	285/C19	—
TX200	285/K	285/K5				
TX400	285/K	285/K9				

HYDRAULIC ADAPTER INSTALLATION

1. Remove the bearing cover (27A) and gasket (26) from the **inboard** end of the pump. Discard the gasket.
2. Install the grease seal (104) into the bearing cover/spacer (27B) with flat side **INWARD**. The lips of the grease seal should face towards the pump head when the cover is attached.



PUMP HEAD - SIDE VIEW

Figure 1

3. Install a new gasket (26) and bearing cover/spacer (27B) on the pump head. Install capscrews (135B) through the adapter and bearing/cover spacer, torquing to 30-lbs. ft (40 Nm.).
4. To assure proper shaft alignment between the hydraulic motor and pump, install the bearing cover/spacer to align with the machined pilot/shoulder on the pump head. See Figure 1.
5. Apply a light coating of grease to the pump shaft, and install the coupling (34) on shaft with the shaft key aligned in the notch. Lock the coupling into place with the setscrew (34A). Rotate the pump shaft until the key is on top.
6. Attach the gasket (26) and hydraulic motor adapter (135) to the bearing cover/spacer. Torque the adapter/bearing cover capscrews (135B) to 30-lbs. ft (40 Nm.).
7. Grease the hydraulic motor shaft. Install the coupling key (35) in the hydraulic motor shaft and align the key with the notch in the coupling. Attach the hydraulic motor to the adapter using the adapter/motor capscrews (135A), torquing to 40-lbs. ft (54 Nm.).
8. Apply grease in the bearing cover/spacer and hydraulic motor adapter through the grease fittings (76).

Recommended Grease:

Exxon® RONEX MP
Mobil® MOBILITH AW-2, or equivalent.

9. Attach hydraulic hoses to the hydraulic motor.